



Part #200

8-15-2005

NOTE: This kit attaches to the suspension cross-member and arms and prevents the assembly from readily flexing which allows the body to roll.

Step #1. Assemble assembly A as illustrated. This will hold the bar's straight mid-section just forward of the suspension cross-member. The arms must be below and to the rear of the cross-member. Leave the lock-nuts loose.

Step #2. Assembly B: Hang the round U-bolt over the tube arm near the wheel assembly. Make sure it is not around the parking brake cable or the service brake hydraulic lines that run on the outside of the suspension arm. Lift the locking device and the base plate up to engage the U-bolt legs. Follow with the bar bracket (around the bar arm and bushing) and washer, then start the lock-nuts. Tighten the lock-nuts to 20 ft/lbs.

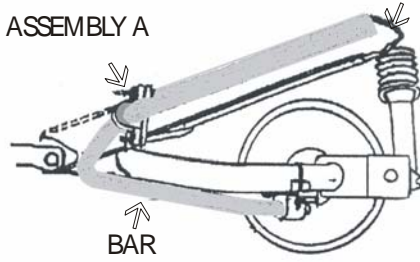
Step #3. Road test the vehicle to familiarize yourself to its new handling. As we cannot supervise your installation or driving, we cannot be responsible for more than the cost of the kit. For best balance and control, this kit should be used in conjunction with our front kit #778.

HARDWARE

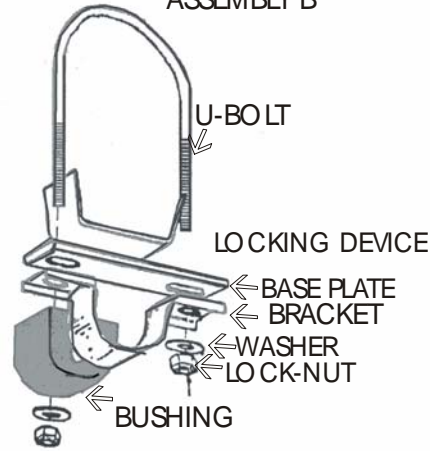
2 RH 407	U-Bolts	2 RH 055	Channel Brackets
4 RH 600	Plates	2 RH 040	Brackets
4 RH 507	Bushings	8 RH 304	Lock-Nuts
4 RH 104	Washers	2 RH 043	Brackets
2 RH 411	V-Bolts		

SUSPENSION
CROSS MEMBER

ASSEMBLY A



ASSEMBLY B



ASSEMBLY A

