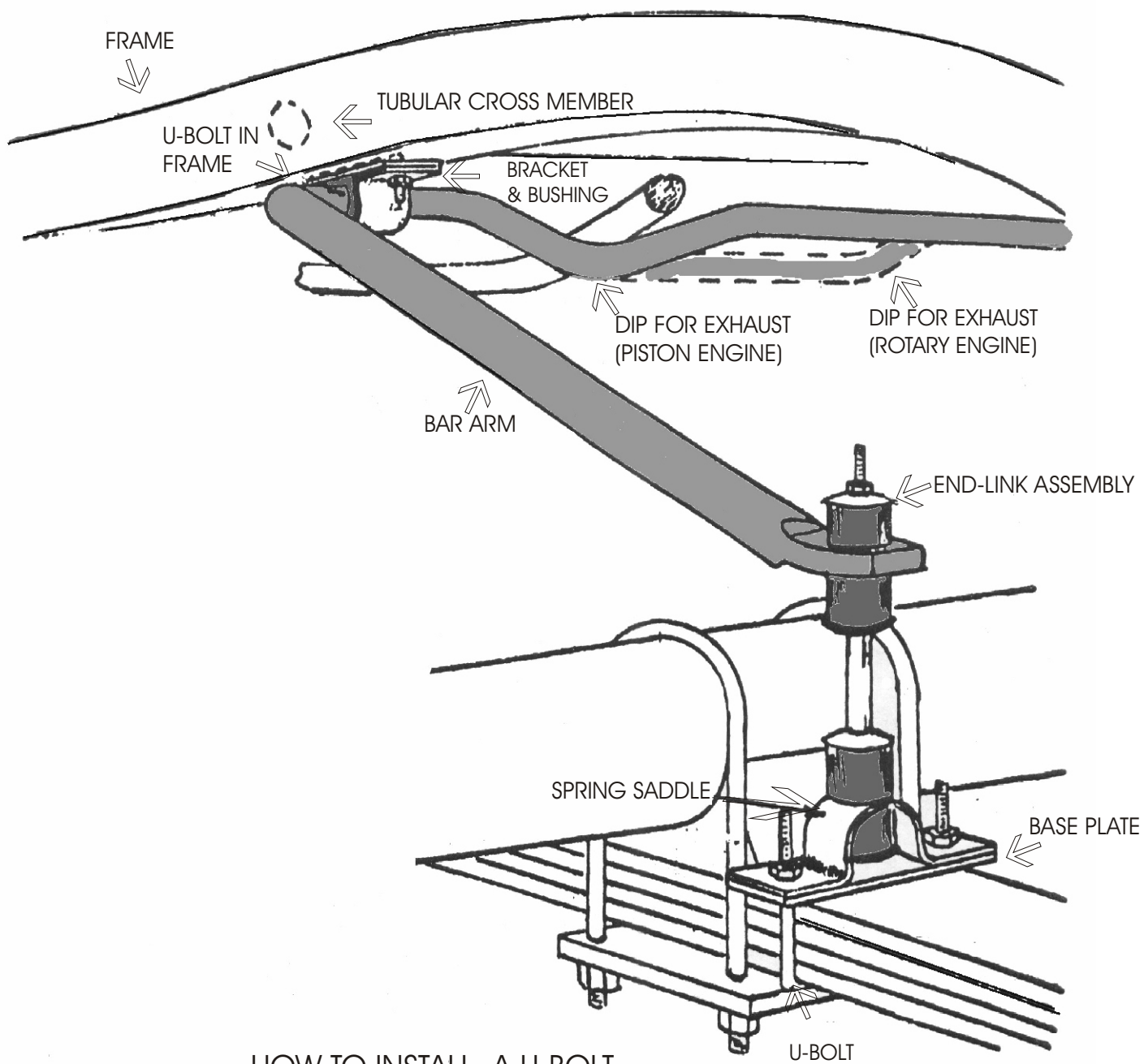
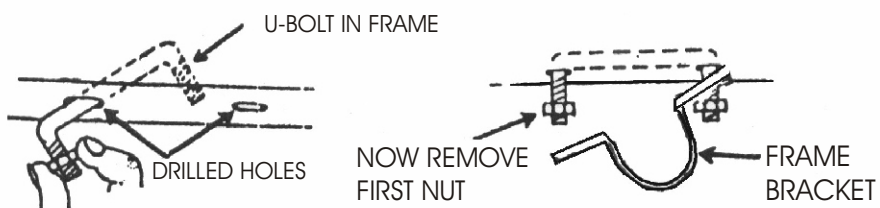


# DIRECTION 210



## HOW TO INSTALL A U-BOLT



## **Direction #210**

- Step #1.** Assemble the end-links as illustrated. Be sure that washers have their cupped or hollow side towards the bushings, and that the bushings have the end with the stepped surface towards the bracket or bar eye. Tighten the lock-nut so the assembly is securely snug but not so tight that the bushings bulge to a noticeable extent.
- Step #2.** Place the mid-section bushings on the bar and position the bar in place under the car. The bar crosses the car to the rear of the axle assembly, dip down, and arms forward over the axle.
- Step #3.** Adjust the bar forward or back until the end-links are approximately vertical. Position the frame bracket up against frame bottom around the bar. The brackets should position just forward of the tubular cross member. Mark through the holes for drilling.
- Step #4.** Drill holes in bottom side of frame with a 3/8" drill bit. Wear eye goggles.
- Step #5.** Place a nut on one end of the short- legged U-bolt, insert the other end into one of the holes and maneuver it until it reappears from the other hole. Position one end of the base plate and bracket on this end and start another nut on it. Remove the first nut and then replace it so as to secure the remaining end of the base plate and bracket. Slide the mid-section bushings under the bracket and tighten the nuts.
- Step #6.** The installation is now complete. Bounce the rear of the car so you can check for clearance of all parts throughout the suspension travel distance. Check all fastenings for suitable tightness. Road test the vehicle to familiarize yourself with its new handling. As we cannot supervise your installation or driving, we cannot be responsible for more than the cost of the kit.

### **HARDWARE**

2	RH 015	End-Links	2	RH 403	U-Bolts
2	RH 031	Plates	2	RH 041	Brackets
2	RH 402	U-Bolts	2	RH 507	Bushings
2	RH 040	Brackets	8	RH 304	Lock-Nuts
4	RH 104	Washers			