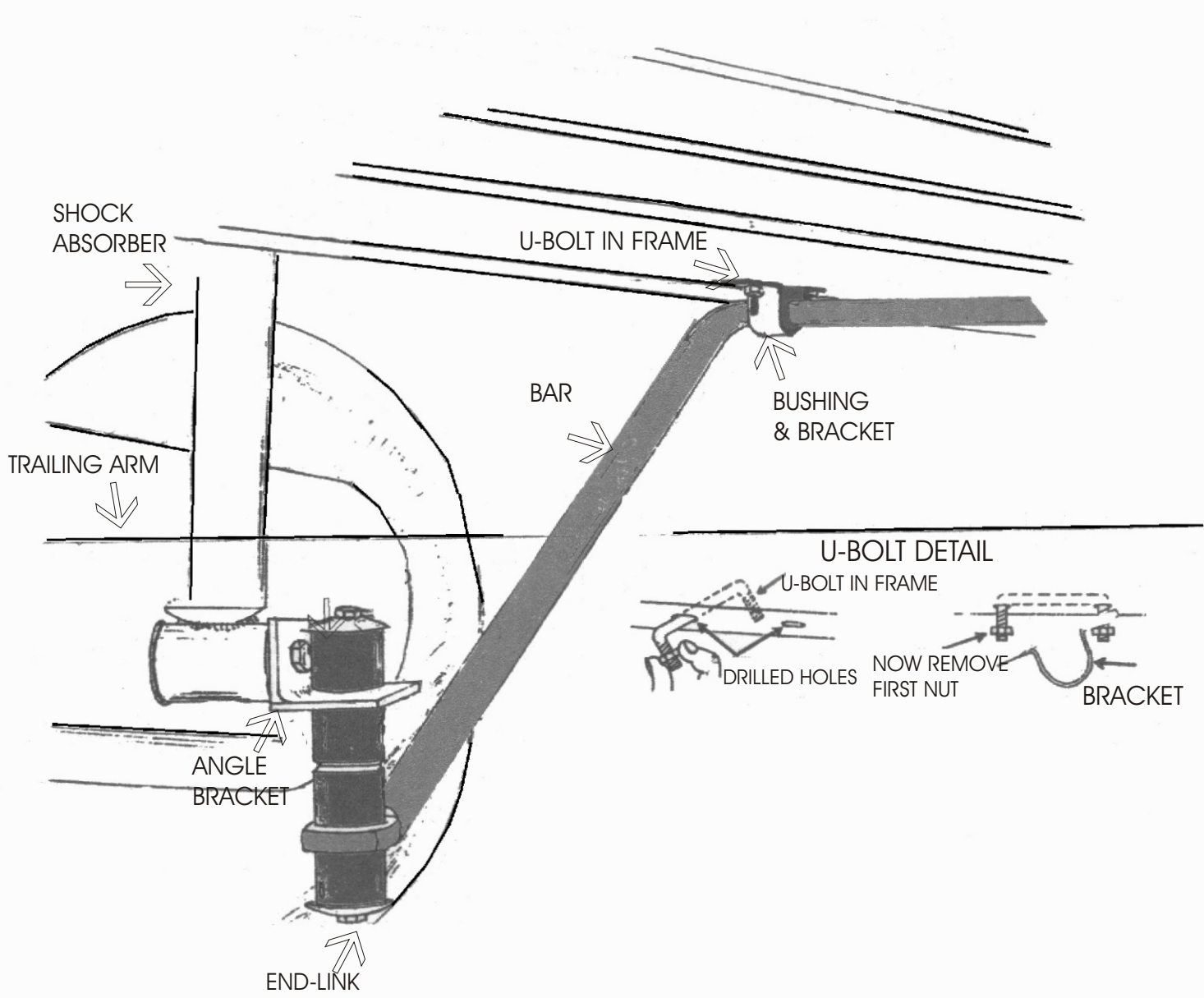


DIRECTION 267



Direction 267

Step #1. Place the large rubber bushing onto the bar.

Step #2. Remove the shock absorber lower anchor stud nut. Replace it so as to hold the angle bracket as illustrated.

Step #3. Assemble end-links onto bar ends so as to connect to the angle bracket. Mid-section of bar should be rearward with the arms to the front. Do not compress rubber out of shape. Tighten nut only enough to keep end-link components snug.

Step #4. Raise bar mid-section up against trunk floor. Place bar bracket around under the bar and mark through bolt holes. Drill with a 3/8" drill bit being sure holes spacing matches the brackets. Check interior of trunk is clear in drilling area before drilling.

Step #5. Place a lock-nut on one end of the U-bolt.

Step #6. From inside the trunk, place the slotted backing plate over the drilled holes and insert the U-bolt legs through the plate and car floor structure. The use of the U-bolt eliminates the need to hold bolt heads when tightening. From below the car, place the bracket onto the U-bolt legs and start the nuts. Then tighten until bracket is secure.

Step #7. Check all fastenings for suitable tightness and road test the vehicle to familiarize yourself to its new handling characteristics. As we cannot supervise your installation or your driving, we cannot be held responsible for more than the cost of the kit.

HARDWARE

2	RH 510 Bushings
2	RH 013 End-Links
4	RH 304 Lock-Nuts
2	RH 402 U-Bolts
2	RH 022 Angles
2	RH 031 Plates
2	RH 040 Brackets