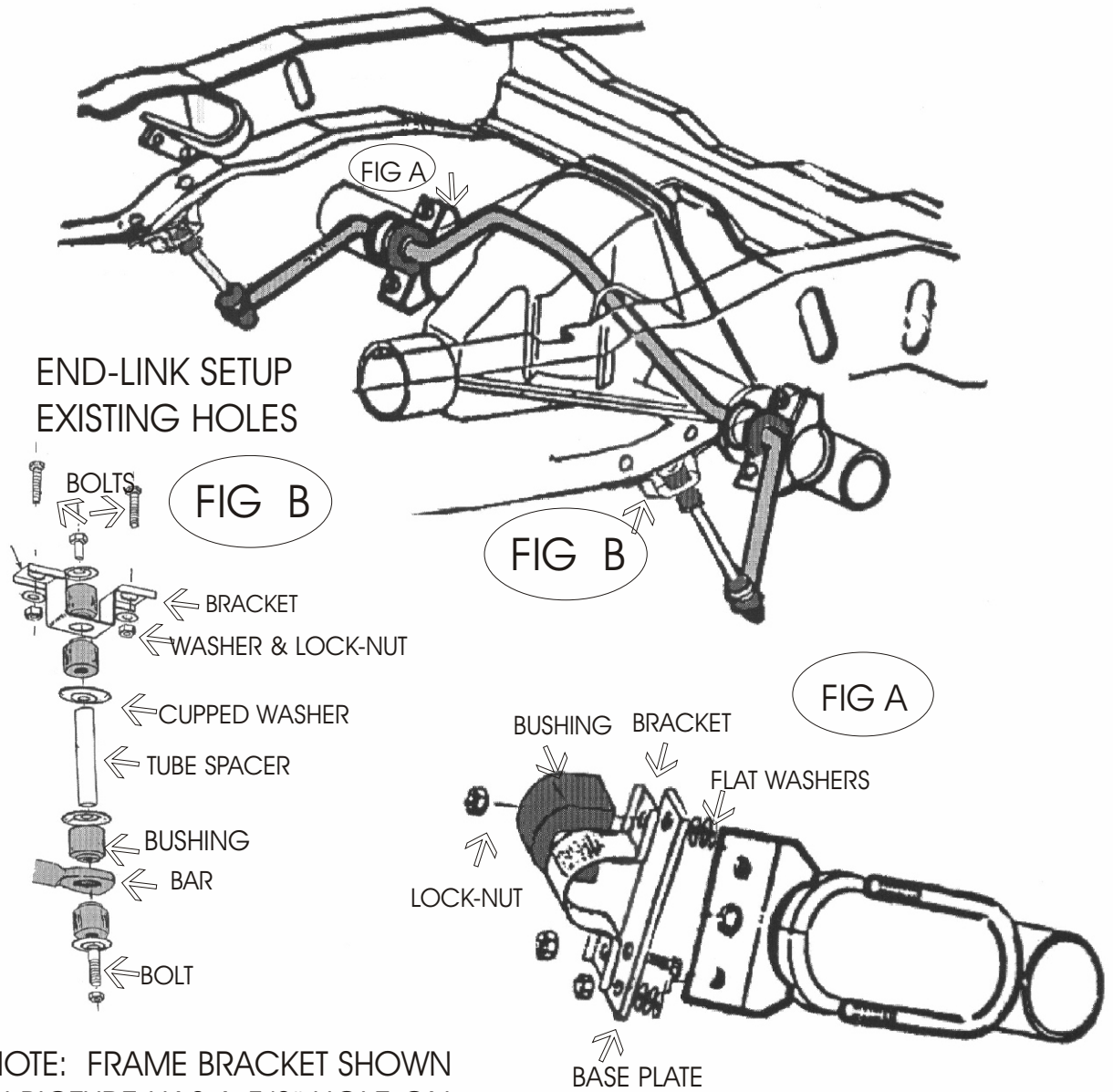
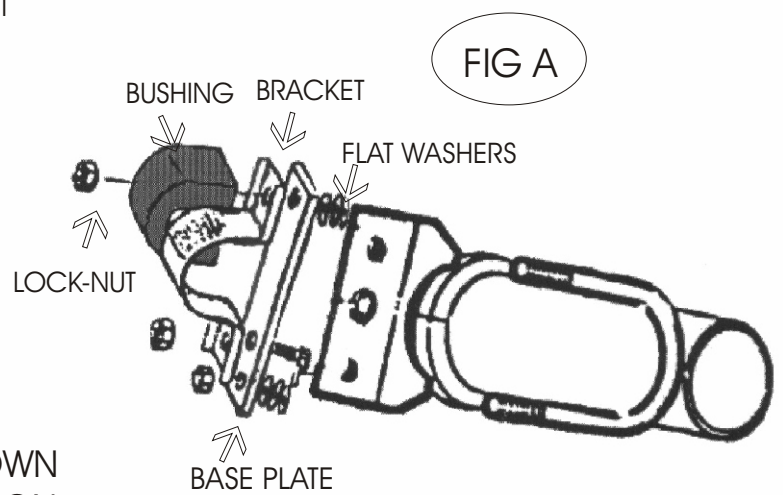
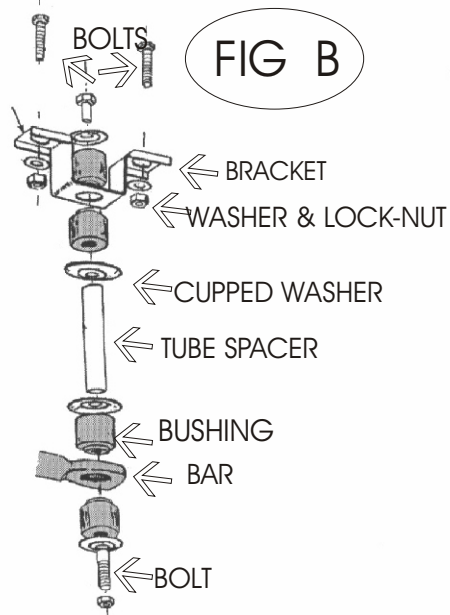


DIRECTION 403



END-LINK SETUP EXISTING HOLES



NOTE: FRAME BRACKET SHOWN
IN PICTURE HAS A 5/8" HOLE ON
CENTER. SOME MODELS USE AN
OFFSET BRACKET.

DIRECTIONS 403

FORD F-350 DUAL WHEEL

- STEP 1.** Remove nuts on U-bolts for shock mount. Place washers on U-Bolt first then put 3/8" bolt through the base plate and then place base plate on U-bolts. (See fig A). Repeat for other side.
- STEP 2.** Place D-Bushings on sway bar and set on base plates. Then using lock-nuts secure bar bracket to base plate. **NOTE:** One hole of bar bracket is placed on U-bolt and the other hole is placed on 3/8"bolt. Finger tighten all nuts on both sides.
- STEP 3.** Assemble end link and frame bracket as shown in fig. B. Mount frame bracket to frame using 3/8" bolt and lock nut. Most models have existing holes, and secure these bolts. Next secure nuts on U-Bolts and bolt bar brackets.
- STEP 4.** Installation is now complete. Bounce rear end to check all clearances. As we cannot supervise your installation or driving. We cannot be responsible for more than the cost of the kit.

NOTE: For ease of installation replace bottom nut on U-bolt to hold assembly.

NOTE: On some models it may be necessary to relocate emergency brake to avoid contact with bar.

HARDWARE

2 RH 509 Bushings	2 RH 040 Brackets
2 RH 600 Plates	6 RH 214 Bolts
6 RH 304 Lock-Nuts	20 RH 104 Washers
2 RH 041 Bracket Center Hole	2 RH 016 End-Links
2 RH 044 Brackets	