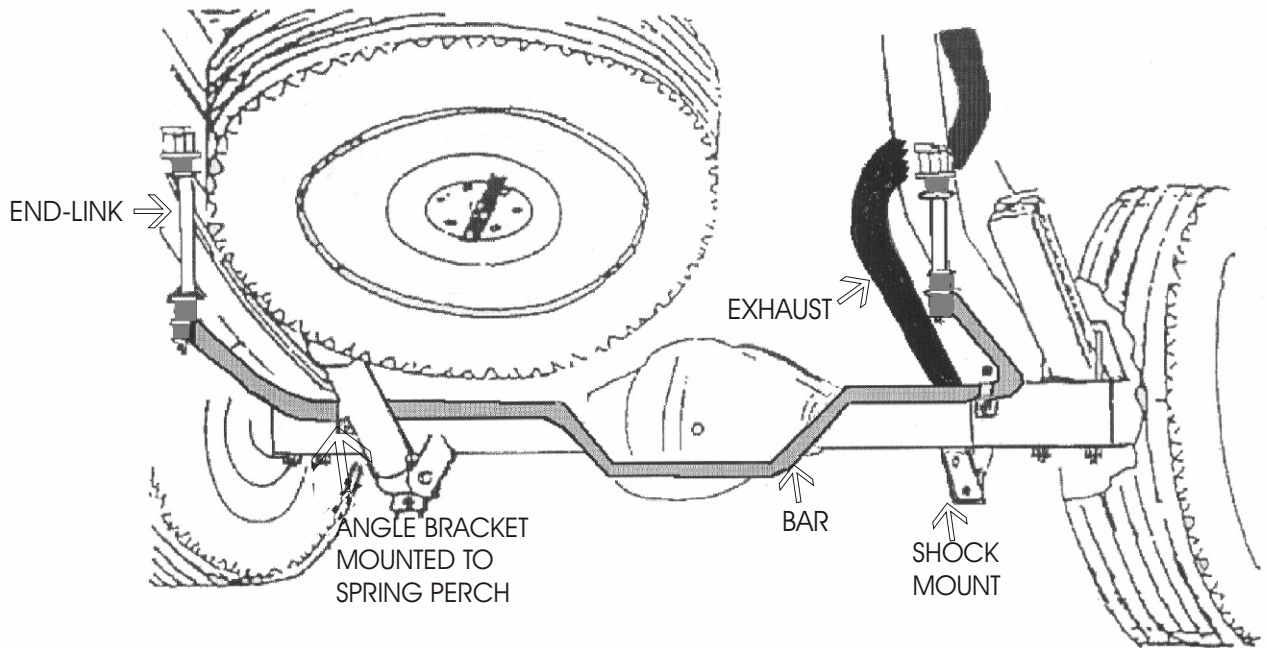
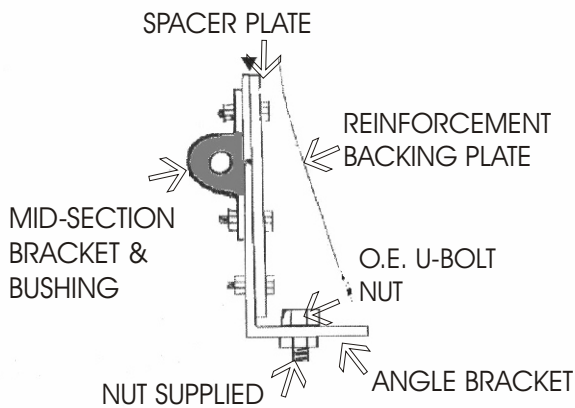


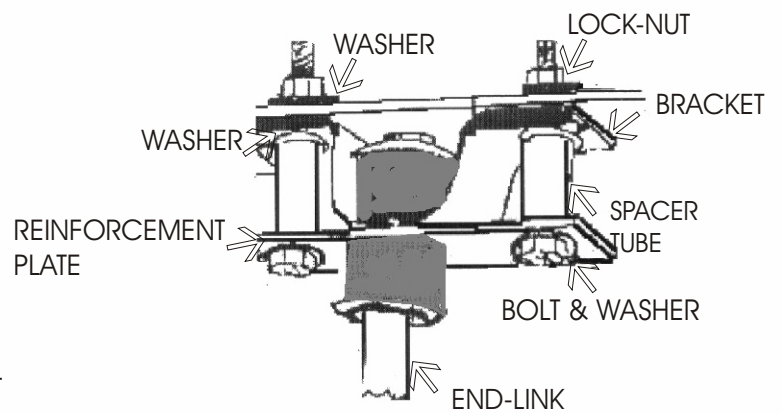
# DIRECTION 412



MID-SECTION BRACKET DETAIL



END-LINK DETAIL



## DIRECTION #412

- Step #1.** Assemble the mid-section brackets to the large angle supplied in the kit as seen in the illustration. Tighten the bottom bolts on both assemblies and leave the other bolts loose for now. Please note that there is a left and right angle bracket. On drivers side it will be necessary to loosen and rotate the bracket that holds the emergency brake cable forward. On both sides it will be necessary to gently bend brake lines so as to clear the large angle brackets. Once proper clearance has been achieved fasten the angle brackets to the bottom of the spring perch using the nuts provided. Tighten to approx. 45 ft. lbs.
- Step #2.** Lubricate the inside of the D-bushings and place them around the mid-section of the bar near the arm bends. With the arms of the bar pointing to the rear and with the dip in the bar pointing down and to the rear, place the bar so that it passes in between the axle tube and the shock on the driver's side. Now place the bar bracket over the D-bushings and attach them to the large angle brackets using the fasteners provided. Tighten to approx. 35 ft. lbs.
- Step #3.** Assemble the end-links as illustrated so as to connect the eye of the bar to the end-link bracket and reinforcement bracket. Rotate bar so that the end-link bracket contacts the bottom of the frame rail. Position the brackets so that the end-links are as close to perpendicular as possible. Using the reinforcement plate as a template, mark the bottom of the frame rail and drill the 3/8" holes. Always wear safety glasses when drilling!
- Step #4.** Now finish assembling the end-link brackets as shown in the illustration using the fasteners provided. Tighten end-links so that they are just snug or until the end-link spacer can not be rotated. **WARNING!** Over tightening of the end-link assemblies could result in end-link failure!
- Step #5.** Check all fastenings for proper torque. Bounce the rear of the vehicle and check the movement of the bar in relation to all other components for proper clearance. As we cannot supervise your installation or driving, we cannot be responsible for more than the cost of the kit.

## HARDWARE

|   |                  |    |                    |
|---|------------------|----|--------------------|
| 6 | RH 213 Bolts     | 10 | RH 304 Lock-nuts   |
| 2 | RH 017 End-links | 2  | RH 074W Brackets   |
| 2 | RH 027B/C Angles | 4  | RH 066 Tubes       |
| 4 | RH 210 Bolts     | 14 | RH 104 Washers     |
| 2 | RH 034B Plates   | 2  | RH 033B Plates     |
| 2 | RH 041 Brackets  | 2  | RH 033C Plates     |
| 4 | RH 306 Nuts      | 2  | RH 613W D-Bushings |