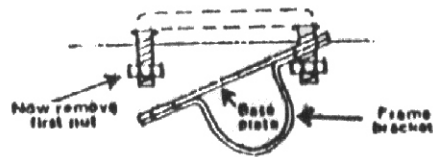
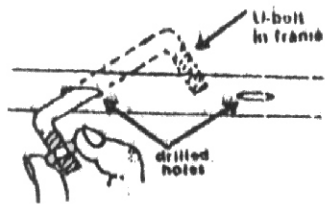
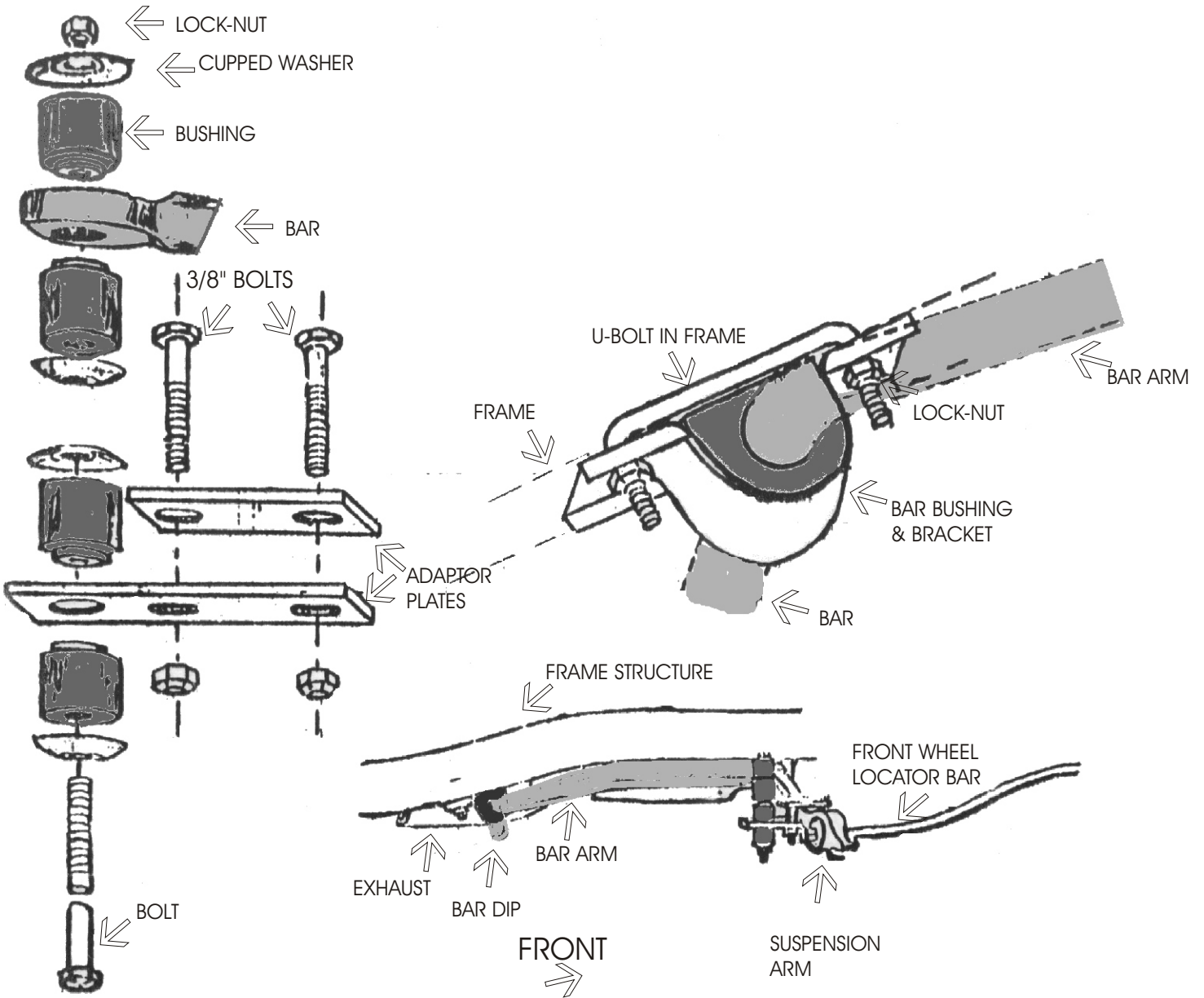


DIRECTION 776



DIRECTIONS 776

- STEP #1.** Place suspension arm clamps on front suspension arms with the large hole to the rear. Loosely secure with bolts. Move clamp as far out as possible to where arm widens at the strut connection. Tighten nuts. Note: On late models, suspension arms are stamped inverted U-sections, rather than forged H-sections. On these use the angle bracket supplied and bolt it to the rear of the A-arms, via a drilled 3/8" hole.
- STEP #2.** Position bar under car so midsection is to rear of the front wheels, and the arms come forward over the steering rods and the eyes center directly over the large hole in the adaptor plates. Tie mid-section of bar up with string to facilitate work.
- STEP #3.** Assemble end-links as detailed.
- STEP #4.** Place the "D" shaped rubber bushings on the bar near shoulders, flat side facing frame bottom. Raise bar mid-section so bushings rest against frame, cover with frame bracket, and mark through holes. Drill frame bottom with 3/8" drill bit.
- STEP #5.** Secure frame bracket, bar and bushing to the frame bottom as detailed on reverse side. Be sure to keep a nut on the U-bolt all the time when inserting it into the frame so it cannot get lost within. Tighten lock-nuts on U-bolt to 10 ft/lbs.
- STEP #6.** Check all fastenings for suitable tightness. Have someone bounce the front of the car so you can check clearance between the unit and other parts, steering rod, exhaust, etc., throughout the suspension travel distance, and from steering lock to lock.
- STEP #7.** Road test your car to familiarize yourself to its new handling. As we cannot supervise your installation, or driving, we cannot be held responsible for more than the cost of the kit. Important note: As this unit does not replace the existing strut rod, it is not necessary to have the front end realigned; furthermore, this unit reduces the stress on the critical strut/suspension arm connection instead of increasing the stress at this point.

HARDWARE

2 RH 507 Bushings	2 RH 402 U-Bolts
2 RH 040 Brackets	8 RH 304 Nuts
4 RH 226 Bolts	2 RH 058 Plates
2 RH 059 Plates	2 RH 013 End-Links